



IceCarousel

Installation Guide

Copyright Disclaimer

Copyright © 2013 IceTheme - <http://www.icetheme.com/>
This manual can NOT be redistributed without written permission from IceTheme

Author: IceTheme

Table of Contents

1. Installation	3
2. Configuration	4
3. How to create a custom links	9
4. More Information	11

1- Installation

Would you like to display your content in a nice and scrolling way and at the same time increase the usability of your website?

Check out our brand new IceCarousel. A jQuery based module perfect for sites with a lot of content. It can be used for portfolio images, featured content, sales, promotions and other great stuff. IceCarousel offers unlimited amount of items to display, it gives you the option to easily change the speed of the slideshow or whether to display arrows for your slides.

Requirements:

- IceCarousel for Joomla3 requires that you have already installed Joomla3.0 version and have administrator access to it.
- We assume that you have met the all other requirements like the PHP version or the DataBase version for Joomla 3

Below are all the steps showing how to install the module through your Joomla administrator.

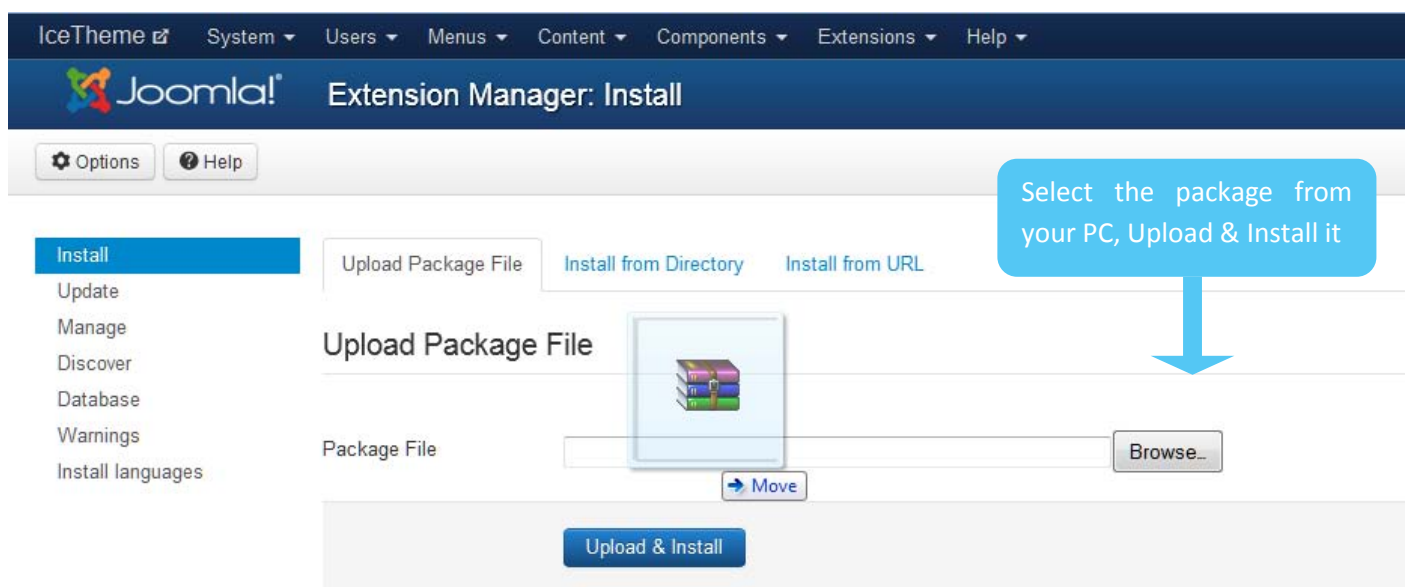
Step 1:

After you have downloaded the IceCarousel_V3.0.1_Unzip_First.zip file you have to unzip it. You will see two files:

- IceCarousel_help.pdf
- mod_icecarousel_v3.0.1.zip

Step 2:

Enter your Joomla Administrator with your username and password, <http://www.your-site-name.com/administrator> and go to “**Extensions Manager**” page. Under the “Upload Package File” select the file (mod_icecarousel_v3.0.1.zip) from your PC, upload and install it.



Once installed you will see a message saying: *"Installing module was successful."*

If you receive an error in a red box saying *"Warning: Failed to move file!"* probably you have not enabled the "FTP Settings" which is on the following:

Joomla Administrator -> Site (main menu) -> Global Configuration -> Server (3rd tab)

If case you still cannot install the items please [Ask for Help](#).

2- Configuration

Step 1: Enable the Module

Go to Module Manager and filter the module by typing “icecarousel” in the filter field.

You have to enable the module by clicking on the red cross sign as showing in the following screenshot:

The screenshot shows the Joomla! Advanced Module Manager interface. At the top, there's a navigation bar with menus like System, Users, Menus, Content, Components, Extensions, and Help. Below this is a toolbar with buttons for New, Edit, Duplicate, Publish, Unpublish, Check In, Trash, Batch, Options, and Help. A green message box states "Message: Item successfully disabled".

On the left, there's a sidebar with a "Site" dropdown (set to "Administrator") and a "Filter:" section with several dropdown menus: Site, Status, Position, Type, Access, and Language.

The main content area displays a table of modules filtered by "ice". The table has columns for Status, Title, Position, and Type. The first row, "IceCarosuel Module", has a red cross icon in the Status column, indicating it is disabled. A blue callout box with an arrow points to this red cross, containing the text: "Enable the module by clicking on the red cross". Other modules listed include "iceslideshow", "IceMegaMenu Module EN", "IceMegaMenu Module DE", "Notice", and "IceShortCodes".

Status	Title	Position	Type
	IceCarosuel Module	icecarousel	IceCarosuel Module
	iceslideshow	iceslideshow	IceSlideShow Module
	mainmenu	mainmenu	IceMegaMenu Module
	IceMegaMenu Module EN	mainmenu	IceMegaMenu Module
	IceMegaMenu Module DE	mainmenu	IceMegaMenu Module
	Notice	notice	Custom HTML
	IceShortCodes	sidebar	Custom HTML

Step2: Select a position for this module

Save

Save & Close

Save & New

Save as Copy

Close

Options

Help

Basic Options

Content Options

Other Options

Advanced Options

Module Assignment

Permissions

Status

Published

Unpublished

Trashed

IceCarosuel Modu

Title *

IceCarosuel Module

IceCarosuel Module

Show Title

Show

Hide

The finest way to displ

Position

Icecarousel [icecarousel]

x ▼

Select a position for the module.

Hide if empty

No

Yes

Select Theme

Access

Public ▼

Ordering

1. IceCarosuel Module ▼

Item Width

Note

Render Thumbnails

Color



Image Width

Step 3: Complete the settings to your liking

- Basically each parameter is explained on the module page. If you put the mouse over the parameter title you should see a small black pop up box to appear. So, there is no need to explain each of these parameters here on this guide.

- However you should keep in mind some things. The first one is to choose the pages/the menus where IceCarousel will appear. Do this in the last tab, Menu Assignment. There isn't any definite selection of menus – all depends on your choice.

- Also you may select the color scheme for IceCarousel the default (white) or dark.

Afterwards the next important step is to select what you want to the module to display.

This is handled by the last parameters in the Basic Options tab, Data

IceCarosuel Module

The finest way to display a large set of items in a nice scrolling way. The module is responsive as well.

- [IceCarosuel Page](#)
- [Support Forums](#)

Select Theme

- None Selected -

Select the theme.

Item Width

260

Render Thumbnails

YES

NO

Image Width

240

Image Height

160

Image quantity

75

Data Source

Content

The data source is from the content by default.

Next, select the category from where the articles will be taken. The way you should work with it is pretty simple: Group the articles (text or images) in a new category (e.g in the category “IceCarousel” and then choose this category in Filtering Options, Source From..

Save

Save & Close

Save & New

Save as Copy

Close

Options

Help

Basic Options

Content Options

Other Options

Advanced Options

Module Assignment

Permissions

Source from

Category

Category

- IceCarousel x

Select some options

Article IDs

Order Results

Ordering - Ascending

Choose which option you like to take articles from.

The other things to set about the module are” the maximal number of items to show (Limits items), the effect (interval or vertical), the autoplay option etc.

8

Save

Save & Close

+ Save & New

Save as Copy

Close

Options

Help

Basic Options

Content Options

Other Options

Advanced Options

Module Assignment

Permissions

Limit Items

12

Display arrows

Yes

No

Display bullets

Yes

No

Display caption

Yes

No

AutoPlay

Yes

No

Slideshow Speed

7000

Animation Speed

6000

Show Title

Yes

No

Title Max Chars

1000


Show Description

Yes

No

Description Max Chars

1000

Some other item settings for the module.

3 – How to create a custom link?

The following are all the steps showing on how to create a custom link on the Ice Carousel Module.

Step 1:

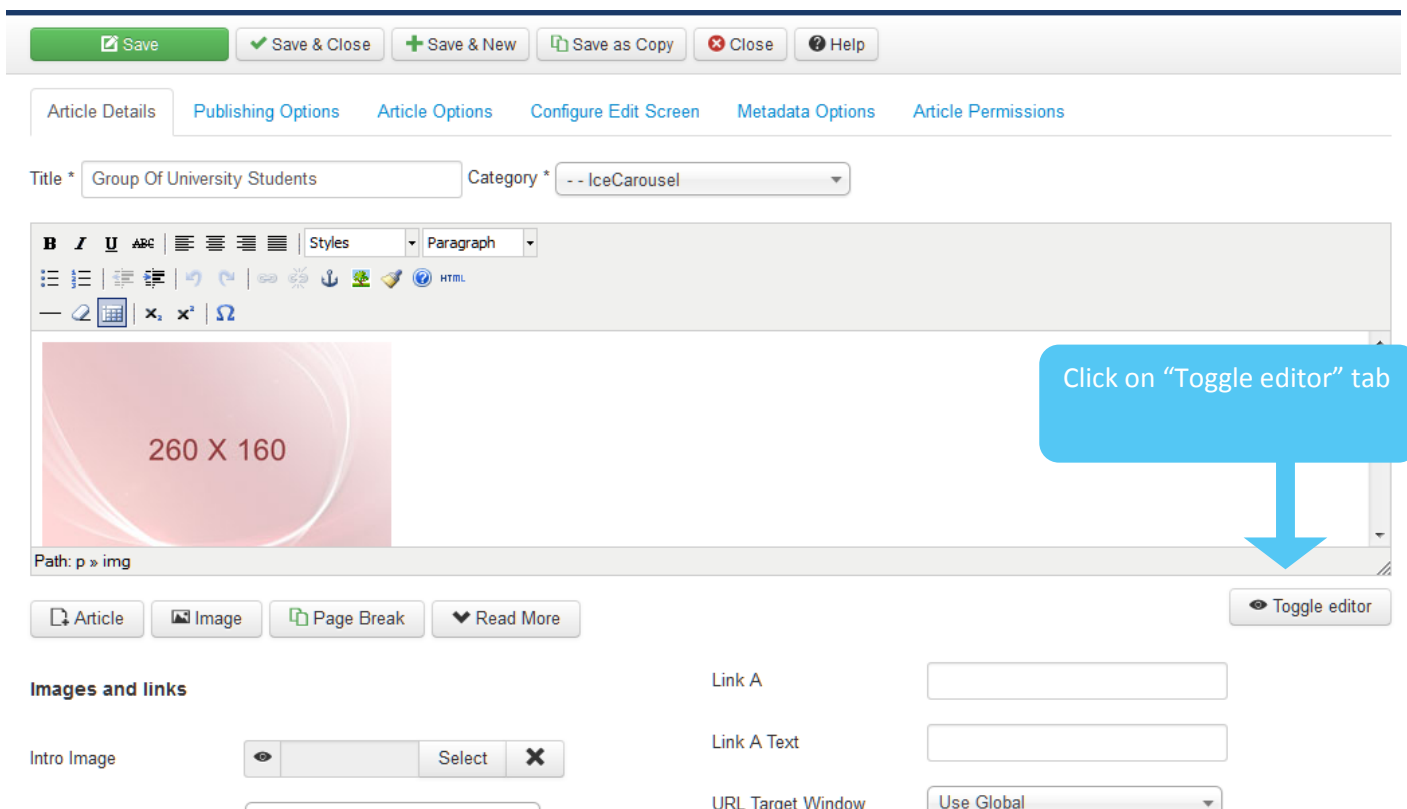
Login to your Joomla administrator and open the module and make sure to have disabled the “Strip HTML Tags” parameter. This is under the “Other Options” tab

Step 2:

Go to Content>Articles Manager and open the articles that you have selected for the IceCarousel module. Make sure to disable first “Toggle Editor ” button and then simply add your link in the following way:

` Your Link Title `

In case you want your link to be simple text and not a button remove the *class btn*



The screenshot displays the Joomla! Article Manager interface. At the top, there are buttons for 'Save', 'Save & Close', 'Save & New', 'Save as Copy', 'Close', and 'Help'. Below these are tabs for 'Article Details', 'Publishing Options', 'Article Options', 'Configure Edit Screen', 'Metadata Options', and 'Article Permissions'. The 'Article Details' tab is active, showing 'Title *' as 'Group Of University Students' and 'Category *' as '- - IceCarousel'. A rich text editor is visible with a toolbar and a large image placeholder labeled '260 X 160'. A blue callout box with an arrow points to the 'Toggle editor' button, with the text 'Click on "Toggle editor" tab'. Below the editor, there are buttons for 'Article', 'Image', 'Page Break', and 'Read More'. The 'Images and links' section includes an 'Intro Image' field with a 'Select' button and a 'Link A' field. The 'Link A Text' field is also present. The 'URL Target Window' is set to 'Use Global'.

4– More Information

For further information please visit the [IceCarousel demo](#).

If these instructions are not enough to install the extension, do not worry. We can help you through our [documentation](#) or support [forum](#). For any other questions email us at info@icetheme.com.

Thank You For Using Our Extension!

Your IceTheme Team

